



**28 YEARS OF SERVICE TO OUR COMMUNITY
1992-2020**

DISTRICT OVERVIEW

- Located in Park County on the Eastern Slope of the Continental Divide of the Central Rockies. The Headquarters Station is in Fairplay, approximately 85 miles southwest of Denver, 85 miles northwest of Colorado Springs, and 23 miles south of Breckenridge.
- The District covers an area of almost 1,500 square miles at an average elevation of 9,000 feet above sea level.
- 911 responses only. 2019 = 1,190 calls for service.
- 60% of calls within 15-minute response time of Headquarters.
- There are no hospitals in Park County. A primary care clinic operated by HealthOne opened in Fairplay, Fall of 2019. There are no nursing homes / assisted care facilities. All patients are transported to Summit County (Frisco), Woodland Park, Salida, Denver, and Colorado Springs. Average time with a patient is 110 minutes for Front Range transports.
- Helicopter transport is routinely used for critical patients. Helicopters are based in Denver, Colorado Springs, and Summit County (24/7).
- Mutual Aid is available from 3 EMS systems in other areas of Park County, also Summit County, Teller County, and Chaffee County. Most mutual aid is about 1 hour away.
- Three primarily volunteer first responder fire protection districts are located within the District. SPAD ambulances and fire district units are co-dispatched for all emergencies.
- EMD dispatching provided by the Park County Communications Center.

DISTRICT FUNDING

- The District is a local government, Title 32 Special District, funded through property taxes and fees for service. The Board of Directors are elected by the public.
- The District initiated operations January 1, 1992.
- 2020 budget is more than \$3.1 million.

STAFFING

- Career / professional staffing with full-time employees since 1992.
- 24 / 7 Paramedic ALS since 1999.
- 3 Paramedic crews per shift with *minimum* of 3 Paramedics per shift.
- 4th out Paramedic ambulance available Monday-Thursday and other times as necessary.
- A Community Paramedic program will be implemented on a limited basis in late 2020
- Denver Metro Protocols.
- Medical Directors: W. Peter Vellman, MD, Denver and Sam Smith, MD, St. Anthony Hospital system.

PAY & BENEFITS

- Schedule of 48 hours on (2 days) and 96 hours off (4 days).
- Employees are paid for every hour on duty, time and ½ for all hours worked over 40 hours per week. Annual pay rate reflects five 48-hour shifts with 80 hours of overtime per month included in the shift schedule.
- Paid twice per month with direct deposit.
- Double pay for working Thanksgiving and Christmas.
- Paid vacation. Years 1-4 = 2 weeks, years 5 and on = 3 weeks.
- Health Insurance, family included (2020 *no* employee contribution required).
- Accidental death / disability / Worker's Compensation / Malpractice insurance.
- Uniforms provided, including extrication PPE and body armor.
- Reimbursement for meals consumed during transports.
- Continuing Education, including ACLS, CPR, PALS/PEPP through the office of the medical director. Employees are paid for all required trainings.

EQUIPMENT

- Total of 6 type I, 4X4 ambulances. Current 1st out are 2 just delivered ambulances and a 2018 and 2016. Reserve ambulance is a 2011 and our reserve / infection response ambulance is a 2008.
- All 1st out ambulances equipped for ALS service. All new cardiac monitors placed into service late 2019. Units equipped with VHF and 800 MHz mobile radios.

STATIONS

- The Headquarters station was completed in February 2003. The station is approximately 9,000 square feet in size.
- A sub-station will be constructed in Hartsel beginning summer of 2020. The northern sub-station will be started in 2021. Additional full-time staffing has been hired in anticipation of the new stations.
- Individual sleeping quarters. Gender specific restroom facilities.
- Full kitchen facilities and crew day room.
- Sub-stations to have preliminary treatment room for "walk-in" patients.



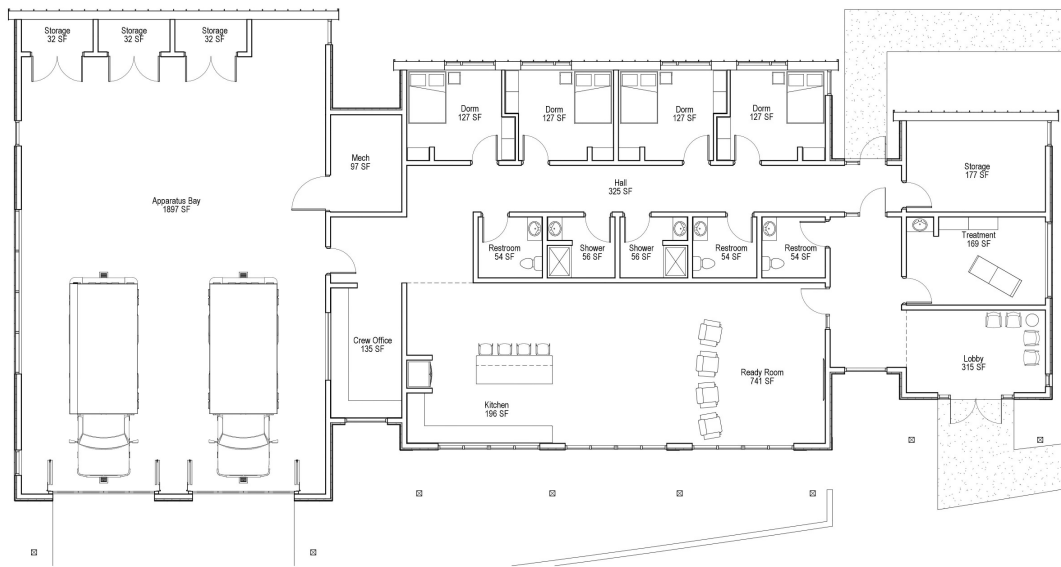
Headquarters Station, Fairplay





New Ambulances / Entering Service June 2020





South Park Ambulance District, Ambulance Substation
Schematic Design Floor Plan

PROJECT NO: 19716.00
ISSUE DATE: 11/01/19
SCALE: 1/8" = 1'-0"

SD-02

© 2019 DAVIS PARTNERSHIP, P.C.

SUBSTATION DESIGN



South Park Ambulance District, Ambulance Station - Hartsel
Perspective Rendering

PROJECT NO: 19716.00
ISSUE DATE: 05/18/20
SCALE:

DD-05

© 2020 DAVIS PARTNERSHIP, P.C.

*South Park
Ambulance District
Park County, Colorado*

