



**29 YEARS OF SERVICE TO OUR COMMUNITY
1992-2021**

DISTRICT OVERVIEW

- Located in Park County on the Eastern Slope of the Continental Divide of the Central Rockies. The Headquarters Station is in Fairplay, approximately 85 miles southwest of Denver, 85 miles northwest of Colorado Springs, and 23 miles south of Breckenridge.
- The District covers an area of almost 1,500 square miles at an average elevation of 9,000 feet above sea level.
- 911 responses only. 2020 = 1,080 calls for service.
- 60% of calls within 15-minute response time of Headquarters.
- There are no hospitals in Park County. A primary care clinic operated by HealthOne opened in Fairplay, Fall of 2019. There are no nursing homes / assisted care facilities. All patients are transported to Summit County (Frisco), Woodland Park, Salida, Denver, and Colorado Springs. Average time with a patient is 110 minutes for Front Range transports.
- Helicopter transport is routinely used for critical patients. Helicopters are based in Denver, Colorado Springs, and Summit County (24/7).
- Mutual Aid is available from 3 EMS systems in other areas of Park County, also Summit County, Teller County, and Chaffee County. Most mutual aid is about 1 hour away.
- Three primarily volunteer first responder fire protection districts are located within the District. SPAD ambulances and fire district units are co-dispatched for all emergencies.
- EMD dispatching provided by the Park County Communications Center.

DISTRICT FUNDING

- The District is a local government, Title 32 Special District, funded through property taxes and fees for service. The Board of Directors are elected by the public.
- The District initiated operations January 1, 1992.
- 2021 budget is more than \$3.1 million.

STAFFING

- Career / professional staffing with full-time employees since 1992.
- 24 / 7 Paramedic ALS since 1999.
- 3 Paramedic crews per shift with *minimum* of 3 Paramedics per shift.
- Total of 20 full-time and 5 part-time employees.
- A Community Paramedic program planned for implementation on a limited basis in late 2022.
- Denver Metro Protocols.
- Medical Directors: W. Peter Vellman, MD, Denver and Sam Smith, MD, St. Anthony Hospital system.

PAY & BENEFITS

- Schedule of 48 hours on (2 days) and 96 hours off (4 days).
- Employees are paid for every hour on duty, time and ½ for all hours worked over 40 hours per week. Annual pay rate reflects five 48-hour shifts with 80 hours of overtime per month included in the shift schedule.
- Paid twice per month with direct deposit.
- Double pay for working Thanksgiving and Christmas.
- Paid vacation. Years 1-4 = 2 weeks, years 5 and on = 3 weeks.
- Health Insurance, dental & vision, family included (no employee contribution required).
- Accidental death / disability / Worker's Compensation / Malpractice insurance.
- Uniforms provided, including extrication PPE and body armor.
- Reimbursement for meals consumed during transports.
- Continuing Education, including ACLS, CPR, PALS/PEPP through the office of the medical director and our in-house education officer. Employees are paid for all required trainings.

Paramedic Starting Pay: \$48,000 - \$50,000 / EMT-IV Starting Pay: \$42,000

EQUIPMENT

- Total of 6 type I, 4X4 ambulances. Current 1st out are two 2019 and one 2021 ambulances. Two additional 2021 ambulances coming online by late summer. Our reserve / infection response ambulance is a 2008.
- All 1st out ambulances equipped for ALS service. All new LP15 cardiac monitors placed into service late 2019. Units equipped with VHF and 800 MHz mobile radios.



- **STATIONS**

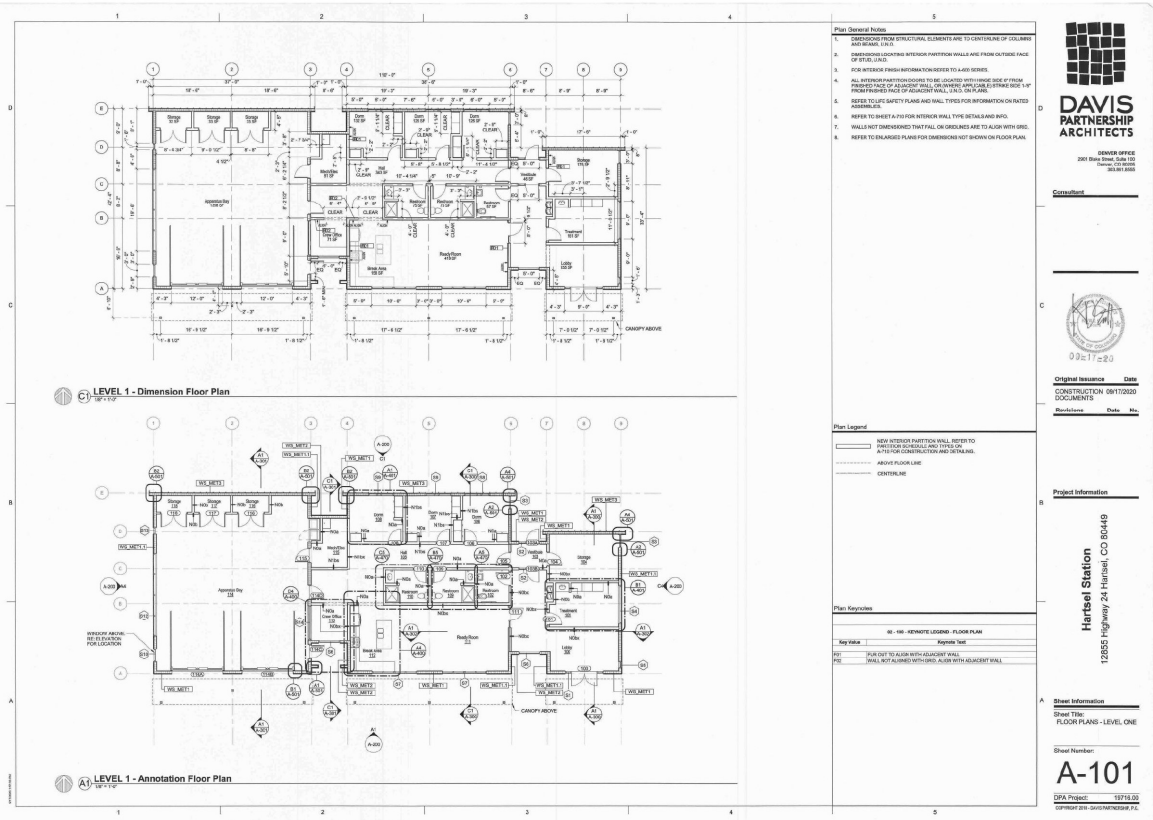
- The Headquarters station was completed in February 2003. The station is approximately 9,000 square feet in size.
- A station under construction in Hartsel will open June of 2021. A third station near Jefferson will soon start construction with completion expected late 2021. The new stations are approximately 4,200 square feet in size.
- Individual sleeping quarters. Gender specific restroom facilities.
- Full kitchen facilities and crew day room.
- All stations to have a dedicated treatment room for “walk-in” patients.



Headquarters Station, Fairplay



SUBSTATION DESIGN



South Park Ambulance District, Ambulance Station - Hartsel
Perspective Rendering

PROJECT NO: 19716.00
ISSUE DATE: 05/18/20
SCALE:

DD-05

© 2020 DAVIS PARTNERSHIP, P.C.



Construction Progress 3/8/21



Rendering of New Station Crew Ready Room



Braun Northwest Entered Service June 2020



2019 Box Remount on 2021 Chassis Progress 3/8/21

South Park Ambulance District Park County, Colorado

